

haljas



Hele Mini

User manual

haljas.com

Table of Contents

1	Introduction	2
2	Manufacturer.....	3
3	Definitions	3
4	Symbols.....	4
5	General safety information	5
6	Personal protective equipment	8
7	Residual risk.....	9
8	Product description	10
	8.1 Sauna parameters	12
9	Storage	13
10	Installation	14
	10.1 Electrical connections	14
	10.2 Heater and stones	15
11	Pre-use inspection of the product.....	16
12	Usage of the product	17
	12.1 First heating	18
	12.2 General tips.....	18
	12.3 Operating the control unit.....	19
13	Maintenance.....	21
	13.1 Properties of the wood.....	23
	13.2 Cleaning.....	23
	13.3 Glass maintenance	24
	13.4 Platform removal and maintenance.....	24
	13.5 Door adjustment	26
14	Utilization	27
15	Warranty	28

1 Introduction

This user manual (original instructions) gives an overview of product and its purpose. The manual includes information about the manufacturer, intended use, handling and maintenance of the product. It is mandatory to read and follow this manual and its annexes to ensure safety. Keep this manual in a safe place for future reference by all users of the product.

The product must be used and operated only as intended. It is strictly forbidden to use the product for non-intended purposes.

The product is a ready-made outdoor sauna with reflective exterior.

To get familiar with the product, we insist that you read these instructions very carefully, even if you have worked with a similar product before. The user manual must be read before first usage and after every six months, to get refamiliarized with the contents of this manual. These instructions contain information that is essential to ensure safety when working with the product and the factory warranty remains valid. The user is personally responsible for familiarizing himself/herself with the instructions and for following them carefully. The manufacturer is not liable for any damages that occur due to ignoring the safety standards and instructions in this manual.

When receiving the product, make sure that it has not been damaged after transportation. If you notice any damage or lack of parts, please contact the manufacturer immediately.

2 Manufacturer

Haljas Houses OÜ

Pikk 22, Elva linn, Elva vald, Tartu maakond 61505, Estonia

+372 5373 8677

www.haljas.com

3 Definitions

Handling	Transportation, installation, maintenance or other activities and/or operations where people come into physical contact with the product.
Installation	An operation related to mounting and setting up the product in its operating location.
Transportation	Moving the product between locations.
Utilization	Disposing of the product.
Maintenance	An operation related to cleaning, repair or replacement of parts of the product.
User	Person who installs the product, handles the product, works with the product or carries out maintenance work.
Residual risk	Risk that remains after natural or inherent risk have been reduced by risk control.
Bystander	Risk that remains after natural or inherent risk have been reduced by risk control.
Maintenance sheet	A document to be completed after the maintenance work has been carried out, containing all information relating to the maintenance work carried out.
Maintenance book	A document consisting of maintenance sheets completed for each maintenance.

Table 1 - Definitions

4 Symbols

The warning symbols below are used to indicate the risks that a user may encounter during the handling of the product. Warning symbols shall only indicate situations that may arise in the event of intended use or reasonably foreseeable misuse. Processes that do not display warning symbols are not necessarily safe.

Serious situations arising from non-compliance with safety requirements and/or non-compliance with the instructions in this manual are not marked with warning symbols. Such situations must be considered dangerous.

All possible damages and/or injuries caused by failure to comply with this manual or non-intended use of the product are the responsibility of the user of the product. Any third party shall not be liable for any damage resulting from failure to comply with this manual or from insufficient understanding.



**Potentially hazardous situation.
IMMEDIATE or possibly imminent danger.**

This indicates a hazard that can result in serious bodily injury, health risks, and/or death.

The symbols that are on the product must be available for the user to see when operating with the product.

It is the responsibility of the user to replace the safety stickers if they become unreadable or get removed from the product.



Figure 1 - Read user manual label

5 General safety information



Use this manual as a reference for proper handling, operation, and maintenance of the product.



Failure to follow this manual and its annexes can cause damage to the product and endanger those in the vicinity.

This manual must be used as a guide during handling, operation, and maintenance. In this manual the product is also referred to as a sauna. The product comes with additional manuals that give detailed instructions.

It is mandatory for everyone who uses or maintains this product to read and understand the contents of this manual. Any injuries or damage to people or property resulting from misuse of this sauna are solely the responsibility of the user. This manual must be read every six months to be up to date with the contents. This manual must be always kept with the product and be replaced/reprinted if the manual is lost or damaged.

Upon receiving the product, please make sure that the product has not been damaged during the shipment process and has all the necessary accessories and parts included. If the product is damaged or any necessary accessories or parts are missing, contact the dealer, distributor, or manufacturer immediately and do not put the product into service.

When handling, maintaining, and using the product and its various parts, all applicable national laws, regulations, and the contents of this manual must be considered to ensure the safety and reliability of the product.

For any questions regarding the product or its operating principles not addressed in this manual, please contact the manufacturer.

Modification of the design, addition or removal of parts is permitted only after the manufacturer has permitted the changes in writing.

The manufacturer of the product is not responsible for malfunctions and other risks that may occur with the modified product.



Unauthorized modifications of the product may cause serious injury or death.

The product must be used and operated only as intended. It is strictly forbidden to use the product for non-intended purposes.



Using the product for unintended purposes may cause injury or death.

All operations must be conducted in a well-lit and ventilated environment. Additional lighting and ventilation equipment must be used if necessary. Personal protective equipment must be used.

All operations must be carried out by persons with the appropriate skill and technical competence. The user must be at least 18 years old.

Handling the product under the influence of alcohol, drugs, strong medication or other psychotropic is prohibited.

Children must use the sauna under the supervision of adults.

Do not place anything on top of the heater and double check before turning the sauna on. Do not allow towels or any other flammable materials to come into contact with the heater as they could catch fire.

Avoid drying textiles like carpets and clothing in the sauna, as it may create a fire hazard and cause damage to the wood surface.

Never sleep or fall asleep in the sauna. Doing so may be dangerous and could lead to serious injuries or death.

Do not heat the sauna beyond the temperature limits specified by the heater instructions manual. Excessive heat may cause wood warping or create a fire hazard.

Avoid any physical contact with the heater to prevent burns or injury.

Pressure washing or using a stream of water to clean the sauna is strictly forbidden, as it may permanently damage the wood surface and structure.

Climbing on the product is prohibited.

In case the sauna door becomes blocked during a session, use an available object to carefully break the door glass and exit safely.

Keep the ground around the product free from objects that may cause slipping or falling.

Regularly observe both the exterior and interior of the sauna that there are no damages which could be detrimental to safety.

Do not discard this manual. If the user manual is printed out, it should be done in colour. Do not keep the manual inside the sauna where the manual comes into contact with heat or water. Any questions regarding subjects or points regarding the product that are not covered by this manual should be directed to the distributor or manufacturer.

For information that is not included in this manual or for any additional information, please contact the manufacturer.

6 Personal protective equipment

Personal protective equipment or PPE for short, is any gear that a user must wear to protect themselves against one or several risks. Always use personal protective equipment relevant to your type of work that comply with the rules, regulations, and standards in your country.

During installation, lifting, utilization and maintenance of the product, users, and persons in the immediate vicinity of the product must wear high quality personal protective equipment.



Failure to use personal protective equipment can result in damage of the users' health and/or bodily injury.

The personal protective equipment used must be selected to suit the size of the wearer and take account of any other special mental or physical features of the person.

The personal protective equipment used must not be too large, small, or baggy and must be chosen in such a way as to prevent getting stuck between the working parts or moving parts of the product. Loose hair must be tied up to prevent hair getting entangled in or attached to the product.

Use of at least the following personal protective equipment is required:

			
Wear protective gloves	Wear safety footwear	Wear eye protection	Wear safety helmet

The user of the equipment must assess the risks arising from the working environment and, if necessary, use additional personal protective equipment. The use of more personal protective equipment than specified here is permitted.

7 Residual risk

Residual risk is defined as the risk that persists despite all designed safety measures, safeguards, and additional protective measures. It is important to consider that using this given product may involve situations where risks arise even if fully complying with contents of this manual. The attention and caution of users are always needed when using the product. During the use of the product the following points are considered as residual risk:

- Risks associated with setting up and transporting the product.
- Hazards related to coming into physical contact with the parts of the product.
- Hazards due to the access of bystanders to the product.
- Falling and slipping hazards.
- Risks of birds and animals coming into physical contact with the product.

8 Product description

The Haljas outdoor sauna Mini is a prefabricated, standalone sauna designed for outdoor installation. It is constructed with wooden materials and features a modern design incorporating glass elements. The sauna is available in multiple variations, each differing in size and seating capacity to accommodate various user needs.

The sauna is intended for personal relaxation, wellness routines, and traditional sauna bathing.

This sauna is equipped with a heating system that can either be electric or wood-burning, depending on the chosen configuration. The electric heating option includes a control unit for adjusting temperature and settings, while the wood-burning heater offers a traditional sauna experience. The structure is designed to ensure proper ventilation and air circulation during use.

The sauna includes built-in benches for seating and a door with tempered glass panel. The sauna is designed to comfortably accommodate up to three people at a time, ensuring a safe and enjoyable experience for all users.

The sauna is designed for outdoor use and should be installed in a suitable location that meets site access and safety requirements.

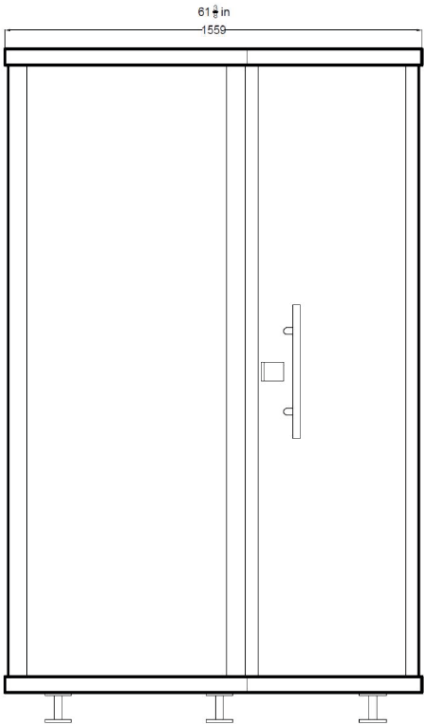


Figure 2 - Sauna front view

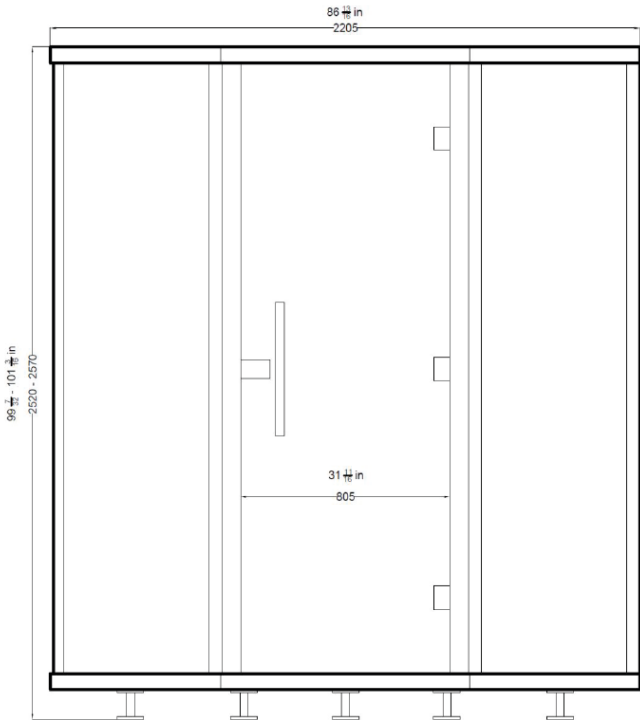


Figure 3 - Sauna sideview

8.1 Hele Mini sauna parameters

Metrical

Weight, no heater, kg	Area, m ²		Height, mm		Length, mm		Width, mm		Heating time, °C/hour	Volume, m ³
	Ext.	Int.	Ext.	Int.	Ext.	Int.	Ext.	Int.		
630	2.35	2	2550	2200	1600	1485	1600	1485	80	5.2

Imperial

Shipping Weight, lbs	Weight, no heater, lbs	Area, sq. ft		Height, ft		Length, ft		Width, ft		Heating time, °f/hour	Volume, ft ³
		Ext.	Int.	Ext.	Int.	Ext.	Int.	Ext.	Int.		
1780	1388	25.3	21	8.37	7.22	5.25	4.87	5.25	4.87	144	184

*Shipping weight may vary based on the type of packaging material.

9 Storage

The product must be stored in a dry, cool, well-ventilated place, protected from the sun, heat and moisture. If the product is not used for a long time, it must be removed from the power supply, cleaned and wiped dry.

Thoroughly clean the product to remove any dirt or dust that may have accumulated during its usage. Use appropriate cleaning agents and ensure all residues are removed.



Do not store anything on the product.

Do not store anything on the product.

Ensure that rodents do not get access to the product and its wiring. Place the product in a dry, weather-protected location with solid ground/floor. If the product can only be stored outdoors, cover the product with a weatherproof, breathable cover.

10 Installation

All Haljas saunas include a comprehensive installation manual, which is provided in advance to ensure proper preparation before installation. That manual contains essential information about lifting, transporting, and unboxing, allowing users to familiarize themselves with the necessary steps, tools, and requirements for a smooth and efficient setup.

10.1 Electrical connections

Only a certified electrician may connect the sauna and the heater to the power supply.

The power cable of the heater must meet the requirements of UL 62 in the US and CSA 49 in Canada.

It is forbidden to use a PVC-insulated non-heat-resistant cable as the power cable of the heater.

It is recommended to connect the unit to the mains power supply without an earth leakage circuit breaker.

Bring the power cable to the sauna in accordance with the heater manufacturer's manual. All electrical work must be done by a local certified electrician.

Before any electrical work can be carried out, make sure that the incoming main power is switched off and it is safe to work.

The internal electricity cabinet is located under the bench. To access the cabinet, remove the top platform by following the instructions on figure 4. described in 13.4 Platform removal and maintenance.

10.2 Heater and stones

All questions regarding the stones and heater setup will have answers in the provided heater manufacturer's manual.

11 Pre-use inspection of the product

Prior to using the product, a pre-use inspection must be carried out. The pre-use inspection is necessary for the safety of the users and nearby people. Failure to comply with any point of the pre-use inspection may lead to damaging the product and harming those nearby. It is forbidden to start using the product before a pre-use inspection has been performed.

Pre-use inspection must be carried out after maintenance, and before installation. Pre-use check must be carried out after storage and before using the product again

Always remain vigilant for malfunctions during operation. If any signs of malfunction occur, do not use the product and contact the distributor or manufacturer.



Failure to perform pre-use inspection may cause damage to the product and injury to those nearby.

Pre-use inspection must include the following tasks:

- Make sure that all users have read this manual and familiarized themselves with its contents before first usage.
- Make sure that during the visual inspection there are no other irregularities that may prevent the product from properly functioning.
- Make sure the product is not damaged.
- Make sure that the heating unit is not covered with anything.

12 Usage of the product



Defying requirements in this manual may cause damage to the product or surroundings, serious injury or death.

Although moderate sauna bathing appears to be safe and healthy for most people, a person with a medical condition might need to speak to a doctor beforehand. When in doubt, please also contact your general practitioner.

Do not use the sauna if you are feeling unwell. The sauna is not intended for individuals with reduced physical or mental capabilities, or for those unfamiliar with sauna use. Such individuals should only use the sauna under supervision or after receiving proper instruction from someone responsible for their safety.

If you are a regular contact lens wearer, for your own safety please remove the lenses before entering a heated sauna.

The rule of thumb when it comes to sauna bathing is not to overdo it.

Pay attention to how you feel. If you feel dizzy, exhausted by the heat or unwell during a session, exit the sauna and lay down. Especially, if you are not yet used to sauna bathing, you should limit your first sessions. As you get used to the heat, you can slowly increase the temperature and time spent in the sauna. Drinking plenty of water is highly recommended for replacing the fluids lost from sweating.

You should regularly check the security and safety of your sauna, including but not limited to, making sure that the heater and benches are in good condition and securely in place.

Do not use any chemicals inside the sauna, as they may release harmful fumes when heated. Breathing in these fumes can be hazardous to your health. Always follow the safety instructions provided with your specific sauna heater.

Do not use the heater without stones as that poses a fire hazard.

Throw water only on the heater and not on the walls or the platforms.

Extreme care must be taken near the hot heater, as both the stones and metal parts retain high temperatures and may cause burns upon contact.

Always exercise extra caution when moving around the heater.

Using the product is only allowed after a pre-use inspection has been performed.

It is forbidden to place or store items on or under the product that are not related to the intended use of the product.

Avoid any physical contact with hot surfaces of the product during operation to prevent the risk of burns.

Be extremely careful when walking around the product, as brushing against or tripping over the product will lead to serious injuries.

After using the sauna, ventilate the room and allow the surfaces to dry.

12.1 First heating

We recommend running the sauna's first heating without anyone inside. Whether your sauna has an electrical or a wood burning heater, the first heating is meant to burn off any possible residual coatings or impurities from the manufacturing process. Heat up the sauna for at least 2 hours before thoroughly ventilating the sauna.

In case you have ordered the juniper ceiling panel as an optional extra, please note that it can have quite an intensive odour for the few first sessions.

After ventilating the room(s), you may heat up the sauna to the desired temperature, pour some water on the stones and enjoy your first bathing session.

12.2 General tips

- In electrically heated saunas, turn the ventilation on 10 minutes prior to sauna bathing. Leave it on throughout the session and for another 30 minutes after.
- Try using the sauna at different temperatures to find what is most suitable for you.
- Most health benefits are associated with rising body temperature which is easier to achieve by staying longer in moderate temperatures rather than shorter periods in extreme heat.

- Regulate the humidity in the sauna by throwing water on the stones.
- In between, before and after the sessions, drink plenty of water.
- After each sauna session, it is recommended to dip into water or have a quick shower, as this prevents your skin from reabsorbing the toxins released through sweating.
- Use towels for sitting. This is a good practice for making sure your sauna interior stays beautiful and hygienic.
- The door has a sensor which will turn the heater off automatically if the door is left open for a longer period.
- Always use logs that are clean, dry and free from ice, snow, dirt, insects, and small animals.
- Before entering the sauna barefoot, clean the floor of any debris that may have been brought in while carrying logs.

12.3 Operating the control unit

The operation of heater, lights and ventilation is always specific to your heater/control unit manufacturer.

Please read their manual.

13 Maintenance

Maintenance and cleaning are mandatory to ensure smooth and reliable operation of the product. Proper maintenance guarantees optimal usage and elongates the service life of the product.

Do not begin maintenance until the sauna has fully cooled down and been properly ventilated.



Failure to perform regular maintenance may cause the product to malfunction, damage to the product and to the user's health.

To keep the platforms looking fresh, using seating pads or towels on the bench is advised.

Remove seating pads or towels from the benches after each sauna session.

Avoid sitting on the platform in wet swimwear.

The door must be closed to prevent wind from breaking it when not using the sauna. The safest way is to lock it.

Regularly observe both the exterior and interior of the sauna that there are no damages which could be detrimental to safety.

Clear the product's roof of snow when accumulation reaches half a meter in height.



Failure to remove snow from the roof may result in damage to the product and pose a risk to the user's health.

Before maintenance the product must be switched off and removed from power supply.



Before maintenance the product must be switched off and removed from power supply!

During maintenance all safety precautions must be observed, and personal protective equipment must be worn.

The maintenance personnel must be at least 18 years of age. They must have read and understood this manual and must have sufficient experience with comparable products to conduct the maintenance operations. More complex maintenance and repair is conducted by the dealer, distributor, or manufacturer.

All maintenance operations must be conducted in a well-lit and ventilated environment. Additional lighting and ventilation equipment must be used if necessary.

Proper maintenance of the product is a requirement for the warranty.

After performing maintenance, the user must ensure that the product is functioning properly.

For additional information regarding maintenance or when the manual does not provide a solution, please contact the dealer, distributor or manufacturer.

If any parts require replacement, please contact with the manufacturer for information regarding damaged parts.

Only original parts provided or approved by the manufacturer can be used when replacing damaged parts.

Before replacing any damaged parts, make sure the general conditions necessary to conduct the work, are met.

After changing any damaged parts, the user must ensure that the product is working correctly.

13.1 Properties of the wood

Wood is a natural material, and temperature changes may cause its surface to crack or bend. This risk varies according to the material and intensity of use (it is minimal in the case of heat-treated material and home use).

Avoid leaving the door open for long periods. All glass panels in your sauna block 95% of UV rays. Exposing the interior to sunlight may cause discoloration of the wood.

Heat-treated material may emit a noticeable smell when a new sauna is heated, but it will fade over time.

13.2 Cleaning

The product must be cleaned regularly. Cleaning is essential to ensure a safe and comfortable environment for users and to ensure the smooth functioning of the product.

Regular cleaning of the product is mandatory.

Cleaning personnel must wear personal protective equipment during cleaning.

To clean the interior of the sauna, do not use detergents other than those specified. Detergents containing chlorine, benzene or strong cleaning chemicals must not be used, because they are harmful to health when they evaporate.

Similarly, if the interior surfaces of the sauna are retreated, the safety and usage instructions provided by the manufacturer of the substance must be followed. This includes guidance on ventilation after application and how long to wait before using the sauna again. Only substances that are safe for sauna interiors and meet all relevant safety standards should be used. If you are unsure, contact your authorised Haljas retailer for advice.

Wipe off the platform with a clean, damp cloth. Keep excess water from pooling on wood surfaces. Do not use a stream of water to wash the platforms.



Failure to clean regularly can lead to increased fire risk and serious injury or death to users.

13.3 Glass maintenance

Cleaning frequency depends on the surrounding environment and your own needs.

Take extra care when cleaning the upper edge of the glass to prevent accidental cuts.

To begin the cleaning process, soak the glass with clean water and a neutral cleaning compound solution using a soft sponge or cloth. Clean a small area at a time. Apply the solution evenly in a circular motion, then rinse the glass with clean water. Ensure that the cleaning solution is completely washed off.

For drying, use a clean and dry cloth or sponge. To avoid scratches, make sure that the cloth does not have any debris or metal on it.

Water drops from lawn sprinklers often reach the glass as well. Minerals in the water can adhere to the surface and, if not cleaned off promptly, may cause permanent visual marks such as staining or etching. While this does not affect the structural integrity of the glass, the damage is typically irreversible and can only be removed by replacing the glass if a clear appearance is desired. If the glass is not structurally damaged – such as cracked, chipped, or otherwise compromised – and appearance is not a concern, replacement is not necessary.

13.4 Platform removal and maintenance

The sauna bench has been coated twice with a clear water-based sauna wax.

The wood in the sauna should be recoated with a sauna-specific compound (recommended to use water-based wax) once a year for commercial or heavy private use.

Remove all platforms and clean the bottom of the sauna with a product meant for wooden surfaces. Do the same with all platforms and wooden details.

For tough stains and soiling, the platform surface can be removed gently with fine sandpaper. The platform or sanded surface should then be refinished.

Wash the sauna bench with warm water to open up the wood grain so

the dirt comes off more easily. In the same way clean the backrests and especially those parts of the walls that have been leaned against. Choose a soft brush and scrub the benches, backrests and walls along the wood grain. Stubborn stains and small scuffs on the benches and backrests can be removed gently with fine sandpaper. Clean the dust. Finally wash with cold water to close the wood grains and dry the wood using a cloth and by turning on the heat for a short period of time.

Some discoloration of the wood may occur over time. Dark blue or black stains typically indicate that the wood has remained wet and has not dried properly – for example, if a sauna bucket is left sitting on the bench. These dark spots can often be reduced or removed through gentle refinishing.

When refinishing interior elements, we recommend sanding and treating all similar components at the same time. This helps ensure a consistent shade and finish across all surfaces. We also recommend that the sanding and refinishing takes place outside of the sauna.

To remove all removable platforms and details just follow the dismantling instructions:

- The skirting between two platforms can be easily lifted up.
- All floorboards can be removed by undoing the visible screws between the boards.

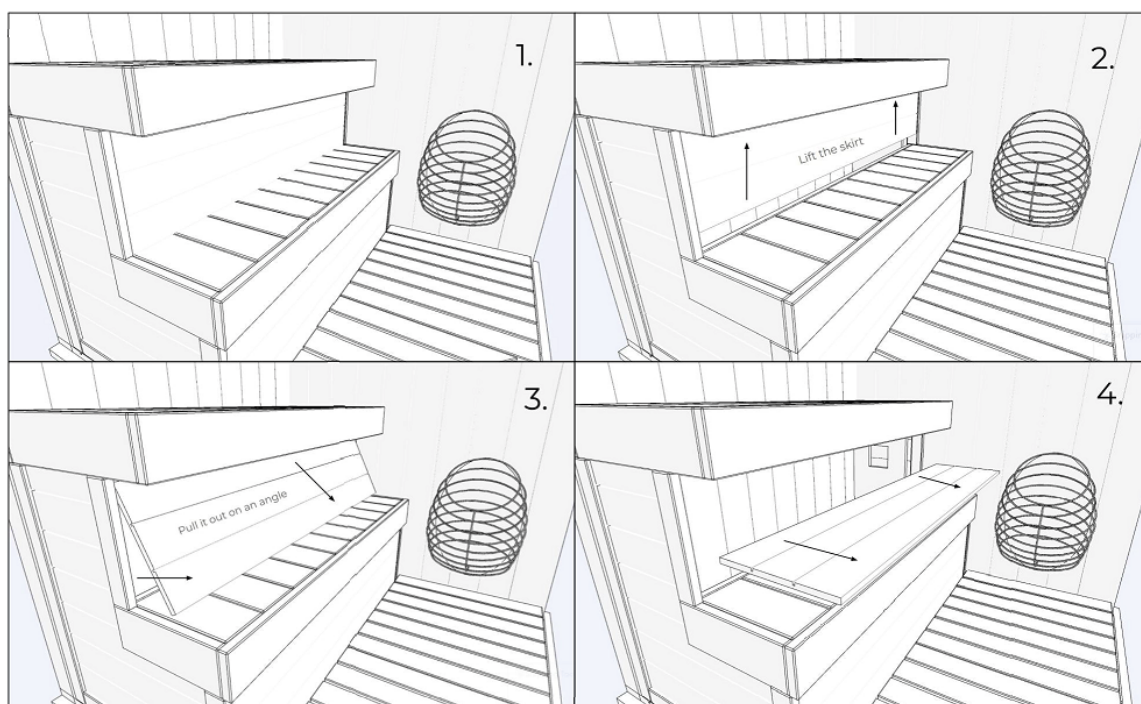


Figure 4 - Removing bench skirts

13.5 Door adjustment

Only adjust the door when necessary. This is a two-man job as one will have to hold the door while the other is (un)tightening the screws.

Firstly, remove the covers (1) (Figure 6) and then loosen up the screws (Figure 5) but do not take them out. Make necessary adjustments and tighten the screws. Only tighten by hand and do not overturn the screwheads!

All Haljas saunas have two roller locks for the glass door. The strength required for closing and opening depends on the roller lock position. A tiny screw on both roller locks adjusts its position in and out.

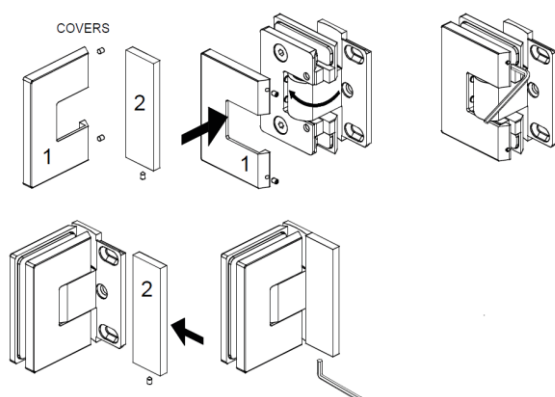


Figure 6 - Cover removal

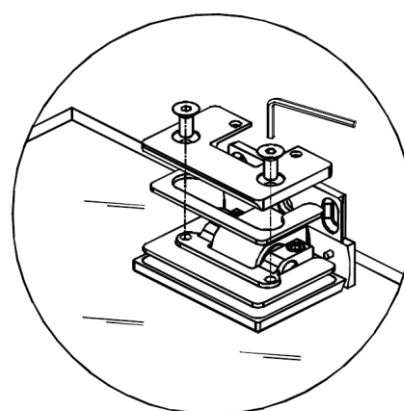


Figure 5 - Adjusting the screws

14 Utilization

Before utilization the product must be switched off and removed from the power supply.

Do not begin utilization until the sauna has fully cooled down and been properly ventilated.

Utilization rules and laws in different countries may vary, before utilization make sure you are aware of the requirements of the proper utilization. Utilization must comply with national requirements, regulations, and laws.

During the utilization personal protective equipment must be used.

Utilization must be carried out by at least two persons. All utilization operations must be conducted in a well-lit and ventilated environment. Additional lighting and ventilation equipment must be used if necessary.

All components used in the product must be removed and taken to the product recycling point.



Failure to comply with disposal requirements may result in damages to the product and injuries to users and other nearby persons.

15 Warranty

The warranty for Haljas Houses products covers material and manufacturing defects for 5 years under private use and 6 months under commercial use. Heaters have their own warranties and requirements. If you have any trouble with your heater, look up the heater manual provided along with the sauna.

The warranty remains on the prerequisite that the product is being used and cared for according to the manufacturers' manuals.

To file a warranty claim, please contact us via homepage contact form: "After-sales support"



In case of a commercial use, the warranty applies for 6 months.

The warranty does not cover variations in wood grain, knots, slight tone differences, or natural effects such as shrinkage, expansion due to temperature and humidity, and moderate deformation, as they are natural characteristics of wood.

The warranty does not cover natural wear and tear that occurs during the intended use of the product.

The warranty does not cover damage to the product caused by human actions.

Surface cracks are not considered defects in material or workmanship, as they are a natural characteristic of wood.

The warranty does not cover damage or injury resulting from the use of improper cleaning products or methods.

The warranty does not cover indirect costs, such as the removal or reconstruction of a terrace beneath the sauna, or any groundwork including excavation, levelling, or surface preparation.

The warranty will be void if the product is independently repaired or if unauthorized modifications are made to the sauna.

In case of any issues concerning the warranty, please contact the manufacturer or distributor immediately.

Carefully crafted, to last

haljas.com